

Capitalizing on Federal Funding & Creating a Sustainable Revenue Stream to Support Stormwater Management

Mass Rivers Alliance

July 26, 2023

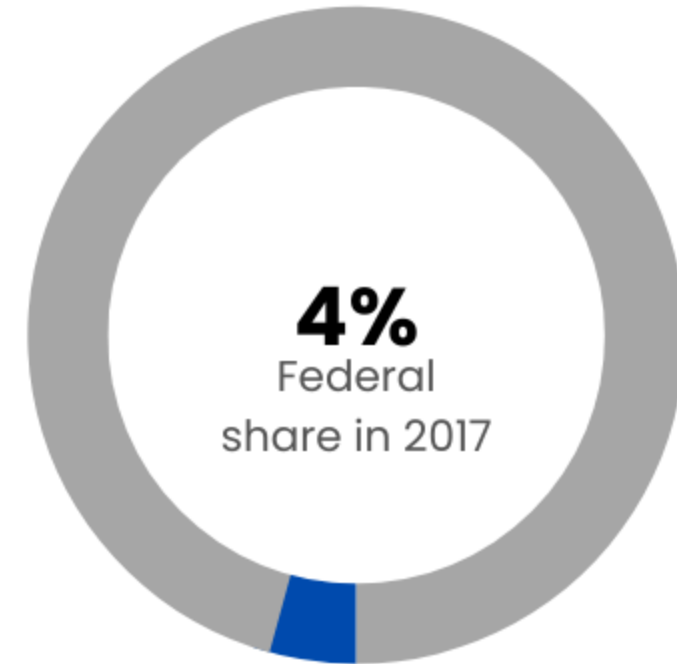
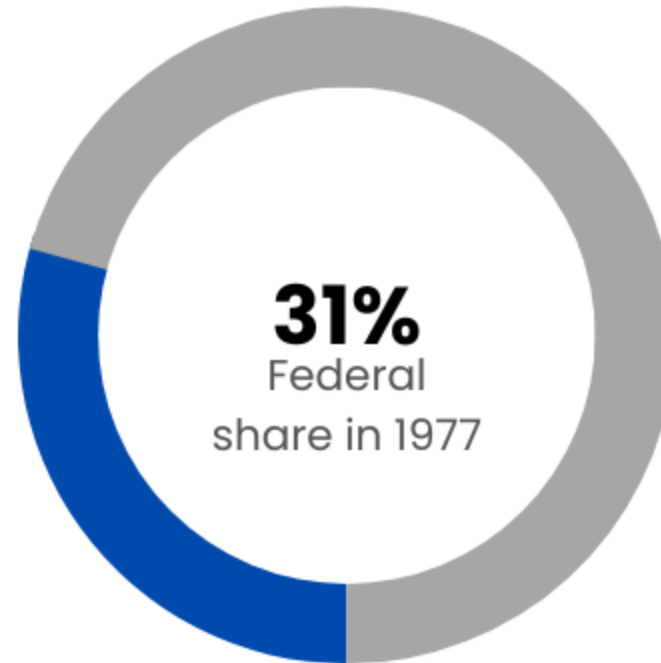
Martha Sheils

Martha.sheils@maine.edu



Investment in Water Infrastructure

In 2017, the federal government provided just **four percent** of capital investment in water and wastewater infrastructure, down from **31 percent** in 1977.

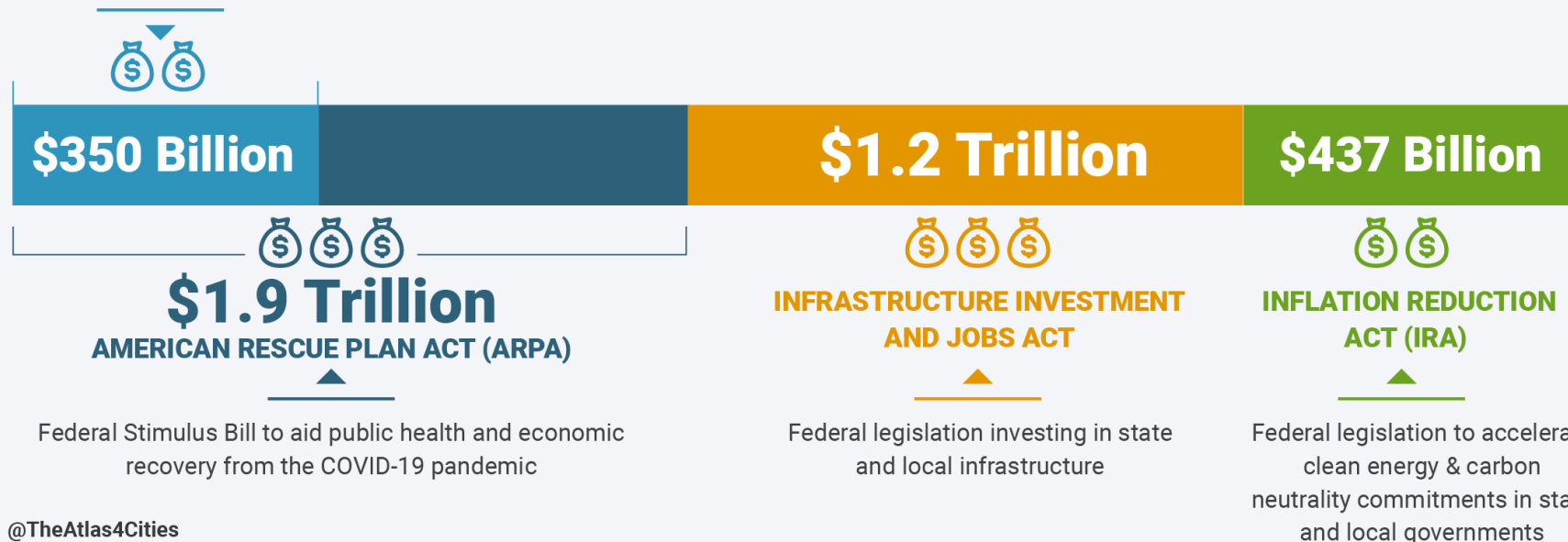


Historic Federal Infrastructure Investment

Federal Infrastructure Funding for State & Local Governments

Signed in 2021 - 2022

CORONA VIRUS STATE AND LOCAL FISCAL RECOVERY FUNDS Additional emergency ARPA funding for state, local, territorial and tribal governments



IIJA (BIL) alone includes **\$50 billion** for water infrastructure via EPA

Emphasis on ensuring **equitable benefits** for disadvantaged communities

EPA Region 1 Technical Assistance



New England Water Infrastructure Network (NEWIN)

Bridging the Gap Between Community Water Challenges & Investment in Water Infrastructure for Future Generations



EPA Region 1 TA services

FREE training and technical assistance to **municipalities, organizations, and tribes** - prioritizing **underrepresented communities** and those with **pressing water quality challenges**

GOAL is to shepherd systems, communities and tribes through the planning, design, and application process to **access capital from SRFs** for water infrastructure

Capacity building and hand holding

NEWIN – Free TA services

Partnerships & Engagement

- Community outreach
- Decision-maker & board education
- Water system partnerships
- Capacity building & training

Planning & Assessment

- Climate resilience planning
- Workforce planning
- Asset management
- Other studies/assessments

Project Development

- Identify/apply for pre-development funds for preliminary engineering
- Lead service line inventories
- Project design
- Environmental reviews

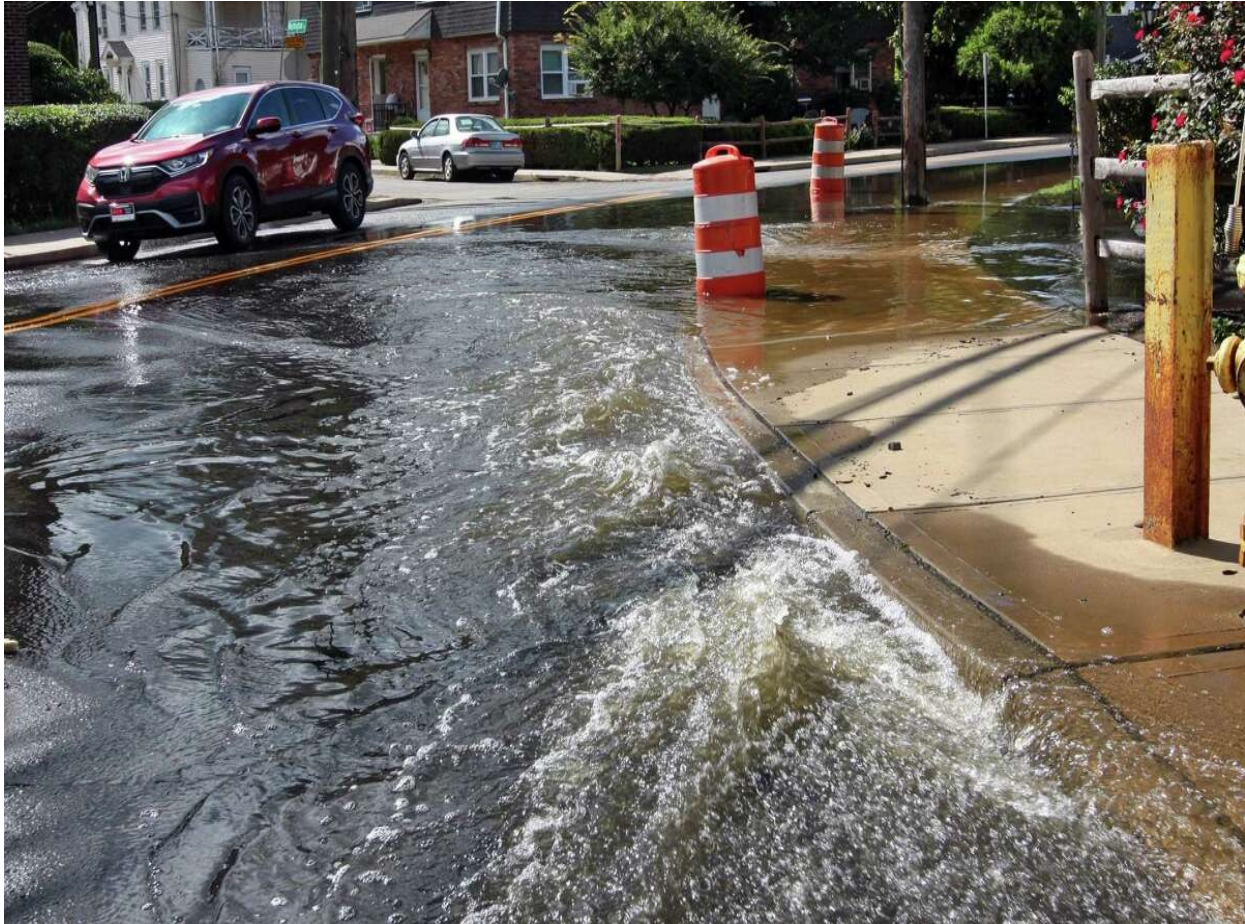
Funding & Financing

- Rates & revenue analyses
- Financial planning
- Identify funding options
- Application support

Project & Construction Management

- Bid support
- Change order review
- Project inspection
- Domestic preference & Davis Bacon assistance

TA Case Study: Stormwater and Flooding

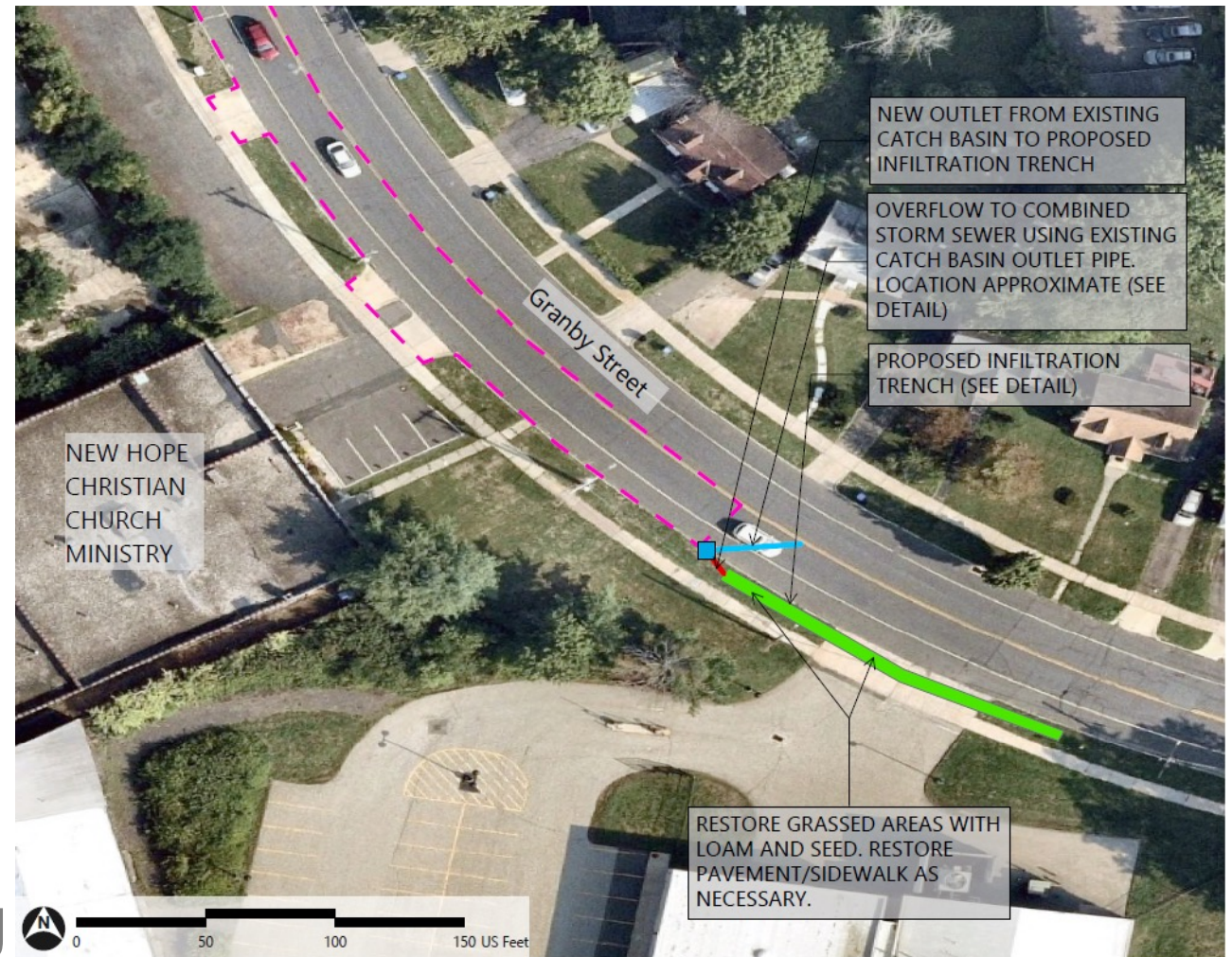


- **Water Infrastructure Challenge**
- Localized stormwater flooding
- Increased frequency/intensity of precipitation
- Densely developed urban areas
- Interest in flexible, small scale/small \$ solutions

TA Case Study: Stormwater and Flooding

What EFC Assistance Looks Like

- Convene and coordinate local and state gov, utility, EPA
- Technical solution that's replicable and scalable
- Access to and help navigating funding/financing to implement



■ Existing Catch Basin
— Existing Pipe
— Proposed Pipe

■ Proposed SCM Footprint
— Approximate Contributing Area
SCM = Stormwater Control Measure

Contact Information

Martha Sheils, Director martha.sheils@maine.edu
207.841.2246

Chloe Shields, Deputy Director chloe.f.shields@maine.edu
207.228.8031

neefc.org