

Introductions



Mary Tchamkina

Manager at Raftelis, focusing on stormwater utilities, water affordability, and technology needed to support them.



Anna Keimel

Staff Engineer at Tighe & Bond, focusing on MS4 compliance, stormwater utilities, watershed planning, and drinking water infrastructure.

Stormwater Utilities in New England

Massachusetts Rivers Alliance Workshop

July 26, 2023





Agenda

1. **Background**
2. **Characterizing Stormwater Utilities in New England**
3. **Why Stormwater Utility?**

Background



Stormwater System

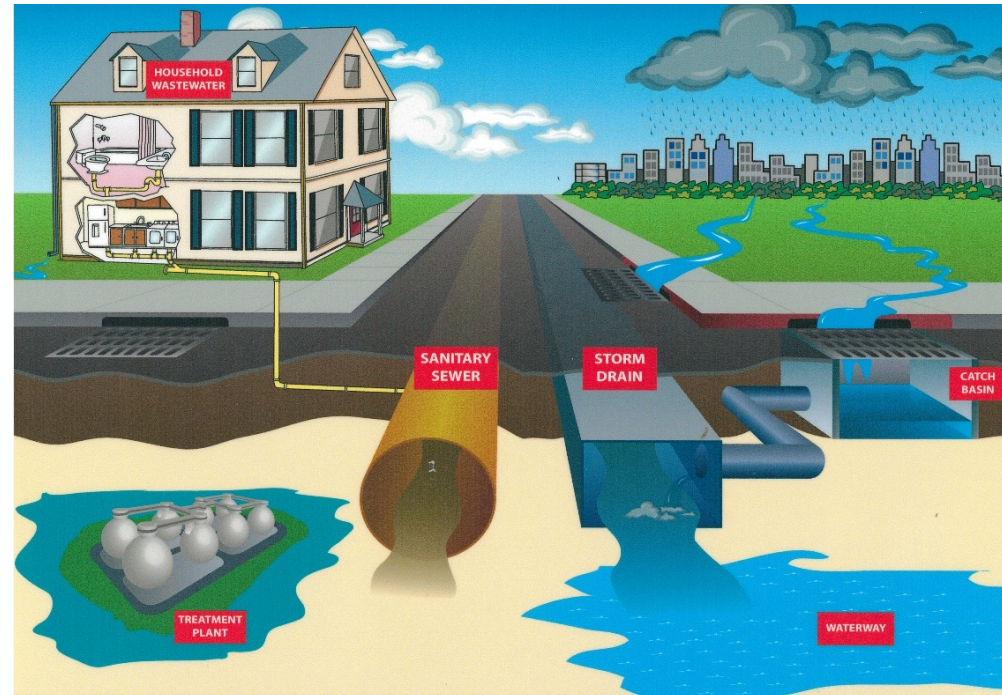
- Channels and ditches
- Storm sewers
- Stormwater force mains and pump stations
- Streets
- Inlets and catch basins
- Stormwater control measures: separators, detention basins, rain gardens, etc.
- Tide gates

Stormwater Program

- OBJECTIVES: Nutrient management, flood and erosion control
- Stormwater management master planning
- Stormwater infrastructure repair and replacement
- Stormwater infrastructure maintenance: channel & ditch maintenance, stormwater main & inlet cleaning, etc.
- Street sweeping
- Municipal Separate Storm Sewer System (MS4) permit compliance
- Combined Sewer Overflow (CSO) abatement
- Water quality or stream restoration grant administration
- Private development review and regulation

What is a Stormwater Utility?

- Dedicated to stormwater services and compliance activities
- Supported by user fees
- User fee frequently established by ordinance
- Generally, distinct from water and sewer funds and general fund



Basis for Fees

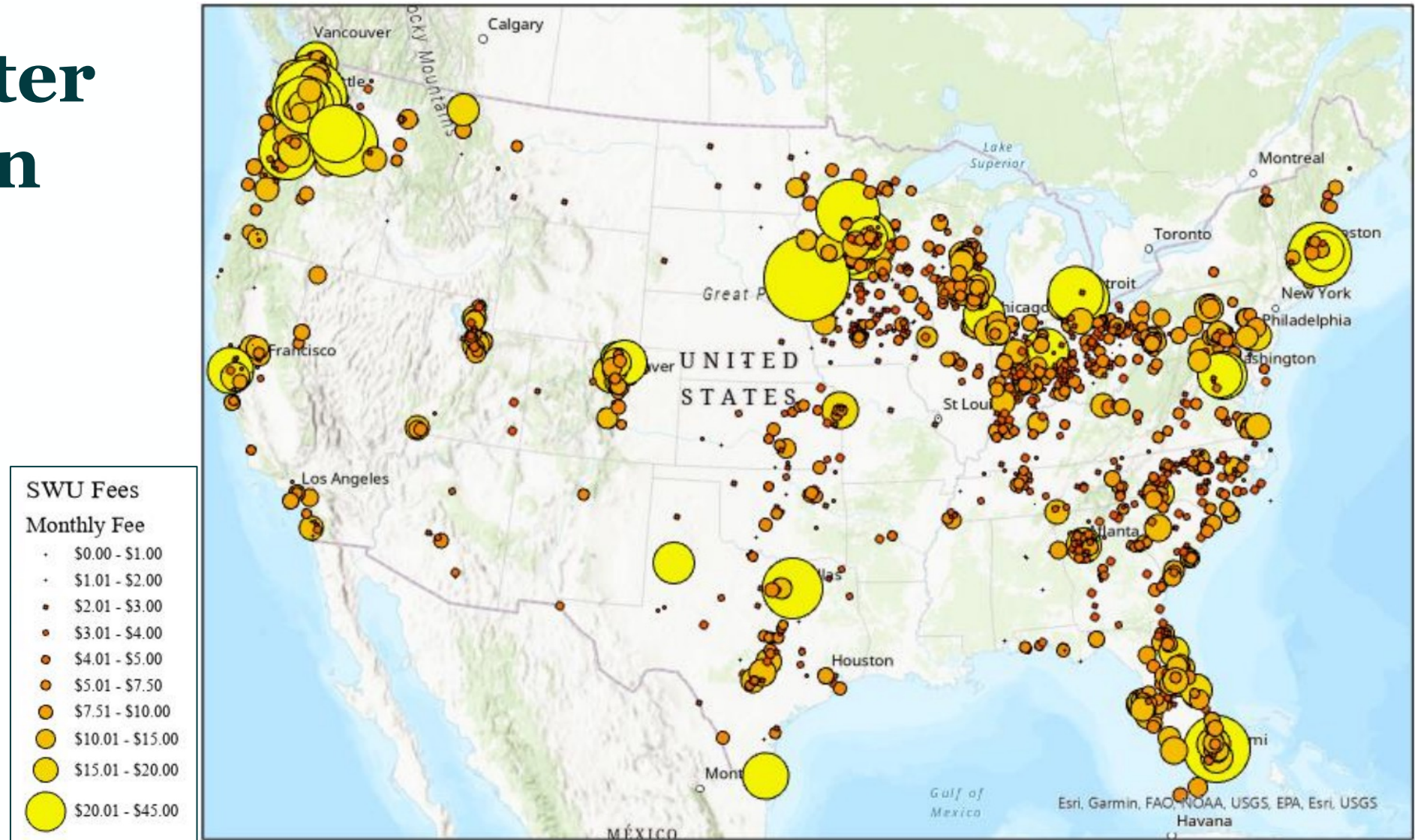
- Fees are most often based on property impervious area (IA).
- A property's IA closely correlates with how much stormwater runoff each property generates.
- Properties with more IA create more runoff and place more demand on stormwater system. They would therefore pay a higher fee under a stormwater utility.
- “Non-metered” fee for service, reflecting demand on stormwater system more accurately and equitably than property value.



Characterizing Stormwater Utilities

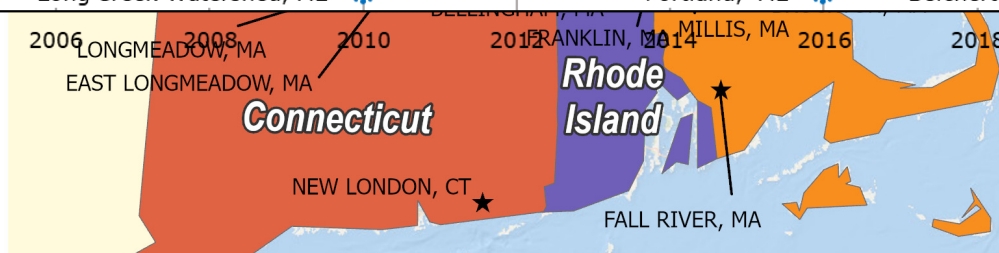
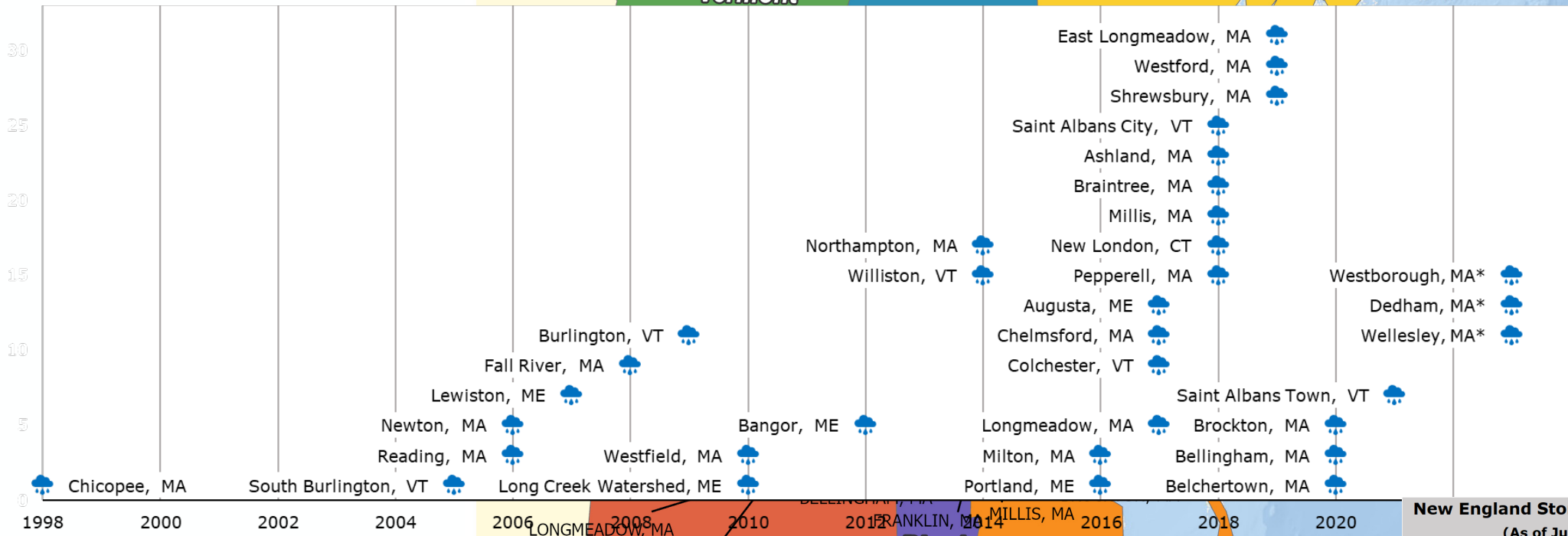
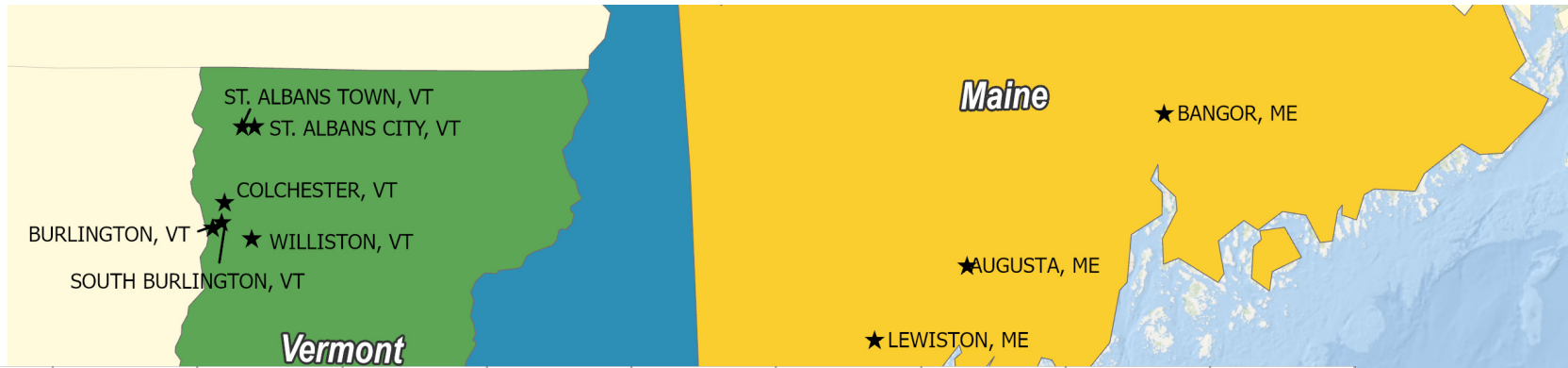


Stormwater Utilities in the U.S.



Spatial distribution of monthly stormwater fees. Western Kentucky University Stormwater Utility Survey 2022, Warren Campbell, Western Kentucky University, Bowling Green, Ky.

Stormwater Utilities in New England

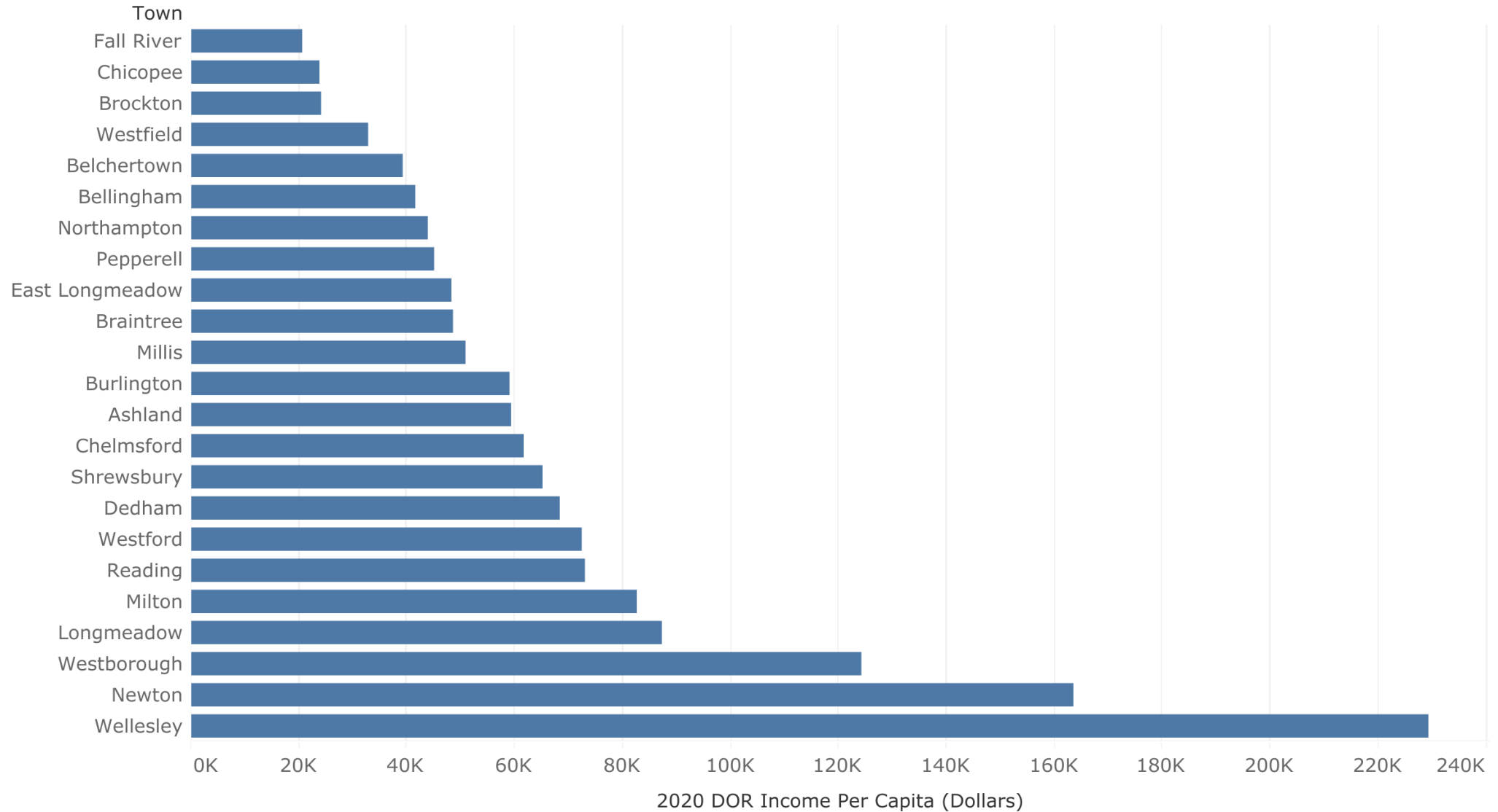


New England Stormwater Utilities (As of July 2023)	
Massachusetts	23
Maine	4
Vermont	6
Connecticut	1
New Hampshire	0
Rhode Island	0

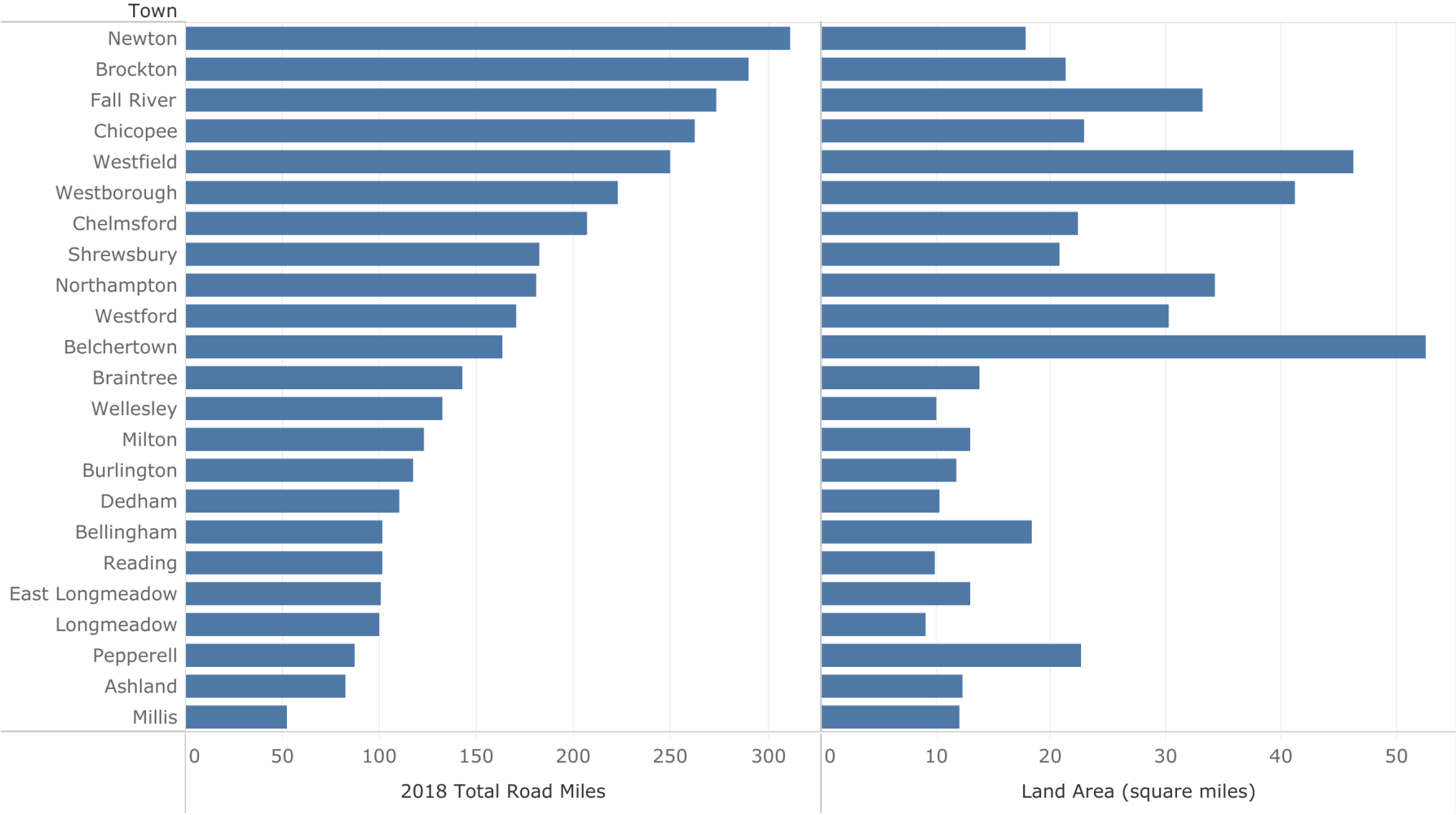
*Indicates utility or enterprise adopted as indicated by public records, but may still require implementation

Source: Western Kentucky University Stormwater Utility Survey 2022, Warren Campbell, Western Kentucky University, Bowling Green, Ky.

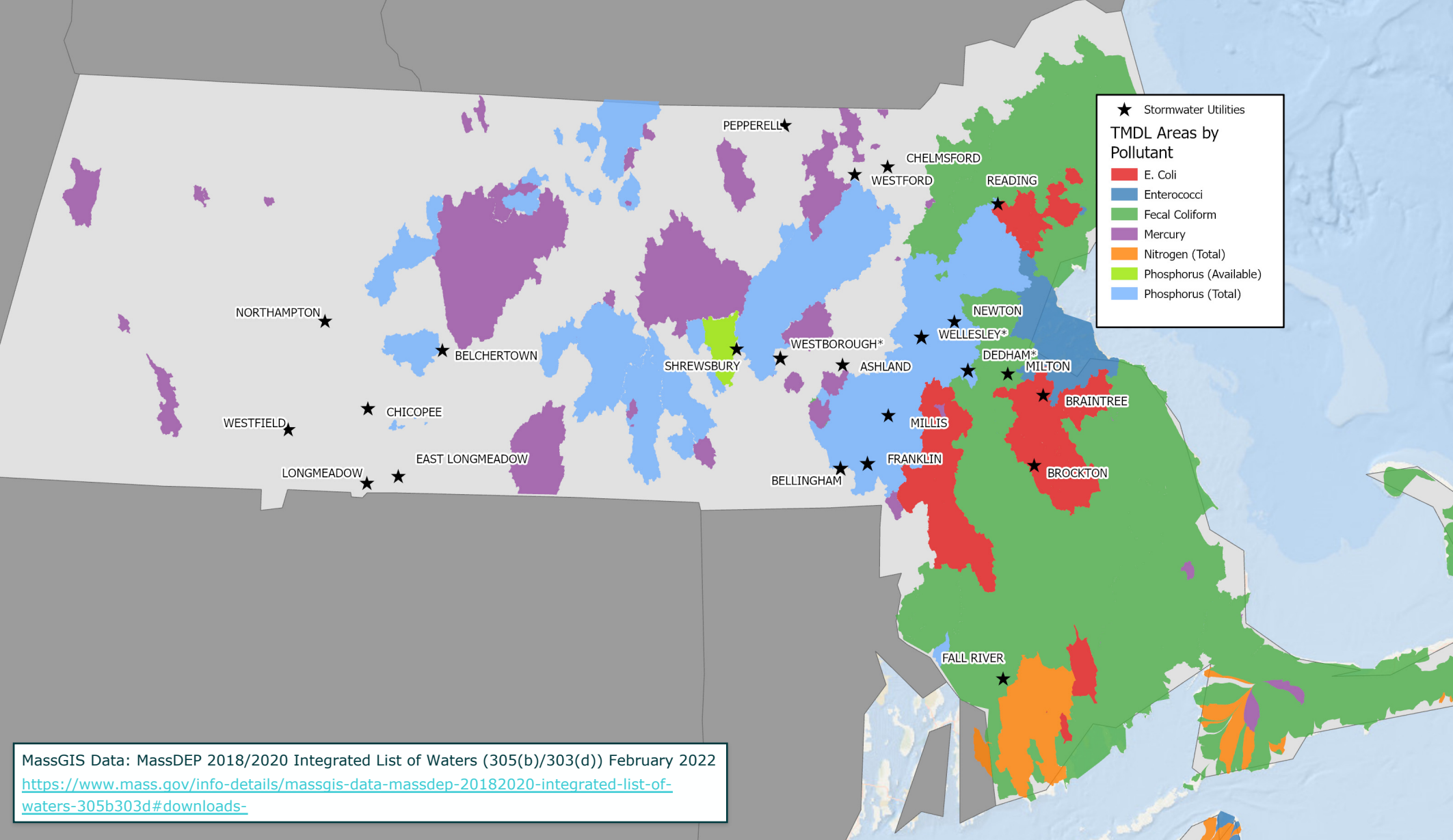
Characterizing MA Utilities



Characterizing MA Utilities



Characterizing MA Utilities



Why Stormwater Utility?



Stormwater Utilities



A fair, equitable, and stable way to collect revenue



Sustainable funding strategy that promotes long-term financial planning



Mindful of need to increase revenues over time, minimize rate shocks, and account for future uncertainty regarding regulations



Align the rate structure and credit program with goals of the stormwater program



Increasingly common in Northeast and nationwide

Utility Development Considerations

Utility basics should be driven by existing City resources, community needs and expectations, and an understanding of industry best practices and peer approaches.

City Organization and Staffing

Structure of organization, workload and capacity for administering new stormwater utility

Data and Systems

Available Data

Billing System(s)

GIS Infrastructure

Peer Communities

Understand best practices within the industry and peer community approaches

Community Perception

Understanding of stormwater infrastructure, program, and needs; public trust

Value of Proactive Communications

Building understanding through public engagement is a crucial step toward securing the financial sustainability of stormwater programs

- Increases community understanding
- Enhances community perception
- Reduces odds of questioning/attack
- Increases staff's ability to respond
- Builds trust

Stormwater Fee Messaging



Focus on the facts and drivers for increasing stormwater program costs, like regulation, aging infrastructure, and climate impacts.



Describe concrete benefits of expanded stormwater program; give examples of planned flood control and water quality improvement projects.



Be ready to positively answer questions from skeptical future customers.

Stay tuned for Workshop 3 on September 12 for an in-depth discussion of communication and stakeholder engagement!

Q&A



Thank you!

Contact: Mary Tchamkina 917.332.7835 / mtchamkina@raftelis.com
Anna Keimel 781.375.2563 / AKeimel@TigheBond.com